

Neighbourhood Profile Update Cambridge City East Neighbourhood

August 2010



Steve Kerridge,
Neighbourhood Policing
Inspector

**Lynda Kilkelly, Strategy
Officer (Community Safety),
Cambridge City Council**



1. INTRODUCTION	2
Aim	2
Methodology	2
2 PREVIOUS PRIORITIES & ENGAGEMENT ACTIVITY	3 - 5
Previous Priorities	
Engagement Activity	
3 AN INTRODUCTION TO ASB IN CAMBRIDGE CITY	6
4 EMERGING ISSUES	6
5 CURRENT CRIME & INCIDENT LEVELS	12-14
6 RECOMMENDATIONS	15

1. Introduction

Aim

The aim of the Neighbourhood profile update is to provide an overview of action taken since the last reporting period, identify ongoing and emerging crime and disorder issues, and provide recommendations for future priorities and activity in order to facilitate effective policing and partnership working in the area.

The document should be used to inform multi-agency neighbourhood panel meetings and neighbourhood policing teams, so that issues can be identified, effectively prioritised and partnership problem solving activity undertaken.

Methodology

This document was produced using the following data sources:

- Crime data and incident data March 2010 to June 2010 and as a comparison data from November 2009 to February 2010 and March 2009 to June 2009.
- Information from Neighbourhood Policing Team July 2010.
- Community intelligence.

2. Previous Priorities & Engagement Activity

Previous Priorities

At the neighbourhood panel meeting on 15th April 2010, the following issues were adopted as priorities. The tables below summarise action taken and the current situation regarding the priorities which were set:

Youth-related Anti-social Behaviour (ASB) in North Barnwell	
Objective	<p>The aim of this plan was to:</p> <ul style="list-style-type: none"> • Identify and engage those suspected of committing offences/ASB, taking positive action where necessary and proportionate • Identify from analysis and public feedback targeted areas and times and provide high visibility patrols to reassure communities and engage suspects • Consider diversionary / preventative activities appropriate to their age range and ability • Utilise both ABCs and tenancy to seek to curb behaviour • Ultimately to seek to positively influence community feeling on the responsiveness and effectiveness of the Police and Local Authority and seek to decrease reports of criminal /ASB in the target locations
Action Taken	<p>There was some confusion early on in conversations with members of the community as to what streets constitute “North Barnwell” for the purpose of this plan.</p> <p>To address this, analysis combined feedback from the community showed that the greatest concentration of ASB and low level criminality in Abbey was in the Thorpe Way estate and Jack Warren Green, which as a geographic location can be clearly visualised.</p> <p>During the period, a degree of community unrest was evident in the area following a series of tyre-slashing and other offences. In addition to conducting investigations and apprehending and interviewing suspects, significant time was spent seeking to understand local frustration and implement measures to ensure confidence and improve satisfaction. This was conducted through surgeries, house to house enquiries and general high visibility patrols at times of greatest need identified in the analysis.</p> <p>Groups of up to 16 youths were encountered and engaged routinely during evening patrols, most of whom were known personally to local officers. Only a small number of those during the period were identified as linked to ASB and dealt with through a number of different resolutions, some diversionary, some in consultation with parents and some through criminal disposal where appropriate.</p> <p>The deployment of the Force CCTV mobile camera van was also used both as a deterrent and to seek to capture first hand evidence of incidents.</p>

	The Mayor, Cllr Sheila Stuart also joined an “Insight” patrol on a Saturday to observe the work of officers on the priority and engage with local young people.
Current Situation	Although there has been a general decrease in incidents of anti-social behaviour during the period, there remain some concerns regarding the Thorpe Way area. Patrolling has shown the green spaces and public areas within the estate remain popular meeting places for young people, some of whom have been linked to numerous acts of anti-social behaviour and low level criminality. With the school holidays in their early stages continued focus during the coming period would be advisable.
Continue or Discharge?	Suggest continue, but that the plan is revised and reworded for clarity to focus work in the main ASB hotspot areas of the public spaces in Thorpe Way Estate and Jack Warren Green.

To continue to develop and implement plan to tackle complaints of excess speed in City East.	
Objective	<ul style="list-style-type: none"> • The intention was to implement a plan that would provide educative and enforcement activity which involved the police, community, ward city and county councillors and officers from the city and county council e.g. county road safety • Through a coordinated response, reduce the speed of vehicles travelling along roads identified as having a speeding problem. • To learn lessons and develop best practice that could be transferred to other areas with similar concerns.
Action Taken	<p>It had been agreed previously to target the following roads: Barnwell Road, Wadloes Road, Perne Road, Cherry Hinton Road, Cromwell Road, Coldhams Lane and Coleridge Road. Where speed survey data was available in the area, Coleridge Road was highlighted as the area of most concern.</p> <p>Action in support of this plan has been limited and a meeting to review progress with councillors was held on 22nd July. It was resolved that more impetus and focus needs to be given by all involved. Further actions have been agreed which include:</p> <ul style="list-style-type: none"> • Endorsement that the plan/project requires both staff and financial resources to be successful. • It requires both enforcement and educational activity. • It requires the support and commitment of all parties to be a success. • Support from parties involved needs to be confirmed and formalised. <p>It is requested that the East Area Committee confirm their support for the continuation of this plan and further agree to request the County Council be asked to provide resources to co-ordinate the project.</p> <p>Continuation of the plan will involve:</p> <ul style="list-style-type: none"> • A combination of enforcement days and high visibility advice/educational days. • ‘Speedwatch’ initiative to be re-invigorated.

	<ul style="list-style-type: none"> • The City Council/County providing some staff for the high visibility advice/educational days along the lines of the cycle lights campaign. Police to co-ordinate enforcement activities. • Enforcement and advice/educational days to take place between the East Area Committee meetings taking place in August and December. • Target areas to be leafleted in advance, leaflets to be delivered door to door by Ward Councillors and Police PCSOs. • New speed survey conducted in Coleridge Road.
Current Situation	Please see above.
Continue or Discharge?	Continue.

To continue to develop community cohesion between residents of Tiverton Way and young people at The Forum	
Objective	To investigate complaints from local residents concerning noise related student behaviour along with environmental issues such as parking, litter and discarded shopping trolleys from The Forum. To seek ways in which the impact of the above can be reduced on the community and community engagement can be promoted.
Action Taken	The third meeting took place with residents on 10 th June 2010 at St. Thomas' Church Hall, Ancaster Way. Agreed actions: 1. ASB team & Councillors to meet with ARU officers to discuss issues relating to student behaviour. (Date for meeting agreed) 2. Residents to arrange resident/new intake get-together in September. 3. Whitfield Group to explore insertion of specific clauses into tenancy agreement relating to anti-social behaviour. 4. Whitfield Group to examine feasibility of limited night-time cover at Forum.
Current Situation	A well-attended meeting with Residents Councillors, Council Officers and representatives from the Whitfield Group. Improvements over some issues raised at previous meetings but residents still have cause for concern over certain student behaviours/disturbances particularly at night. Parking of cars still an issue and to be taken up with the ARU management.
Continue or Discharge?	Recommend discharge but City Council ASB Team to conduct quarterly review with residents and Whitfield Associates.

Engagement Activity

Engagement events permitting members of the public to meet the City East and other Cambridge City Neighbourhood Policing Teams are listed on the Constabulary's website.

They include monthly surgeries at ASDA, The Beehive Centre and Tesco Stores, Newmarket Road and a number of smaller ward surgeries across City East.

For more private matters, officers will be happy to arrange a meeting at your convenience or discuss matters via telephone.

For further details please visit www.cambs.police.uk and look for the "My Neighbourhood" link or call 0345 456 456 4.

An Introduction to Anti-Social Behaviour (ASB) in Cambridge City

It has been noted from recent Cambridge City Neighbourhood Panel Meetings that Anti-social behaviour (ASB) issues are at the forefront of public concern. To address these concerns, this document will now mainly focus on ASB issues and will aim to give greater detail of the problems faced in each ward. As a result, included in this document will be a breakdown of ASB types as well as a summary of the issues raised by the public when reporting incidents. A summary of emerging issues within crime will still be provided.

When an incident is reported, it is given a Closure Class which groups the incident under specific categories. The specific closure classes for those incidents defined as ASB are included in table.1

Table.1 ASB Closure Class Definitions

ASB	Description
AS02.2	Street Drinking
AS03.1	Begging/Vagrancy
AS04.1	Prostitution related activity
AS05.1	Abandoned Vehicle (not stolen/obstruction)
AS05.2	Vehicle Nuisance/Inappropriate Veh use
AS06.0	Noise
AS07.1	Litter/Drugs Paraphernalia
AS07.2	Inappropriate - Use/Sale/Possession of Fireworks
AS07.5	Rowdy/Nuisance - Neighbours
AS07.6	Rowdy or Inconsiderate Behaviour
AS08.1	Hoax Call to Emergency Services
AS09.1	Animal Problems
AS10.1	Malicious/Nuisance communication
AS10.2	Regular caller - HIST INFO
AS11.1	Trespass
AS12.1	Prejudice Incident

3. Emerging Issues

Cambridge East Trends

Offence levels across the neighbourhood have increased when compared to the previous period but decreased compared to the same period last year. This increase is reflected in a variety of crime types but most notably Violent Crime and Cycle Theft.

ASB incidents across the neighbourhood have also increased compared to the previous period but are below those experienced in the same period last year. Such increases may reflect seasonal trends with people spending more time outside in the warmer weather leading to more complaints of noise and rowdy behaviour.

Abbey Ward

- Total crime in Abbey Ward increased since compared to the preceding four months (391 vs. 379) but is substantially lower than the same period last year (391 – 688). The high recording in the previous year was linked to cases of drug possession occurring on the day of Strawberry Fair; an event which did not take place this year.
- Levels of dwelling burglary have again remained stable with 26 recorded offences, compared to 25 in the previous period. There were seven less offences than this time in 2009. There has been a small cluster of offences in the Riverside area and particularly around the Stanley Road/Oyster Row area. Typically, entry has been gained during the daytime by forcing doors and various small electrical items such as computers, cameras, MP3 players and mobile phones have been taken.
- Burglary Other offences have more than doubled compared to the preceding period but remain lower than the same time last year. 65% of offences involved sheds or garages with tools appearing to be the main target. At the end of April and the beginning of May there was a series of burglaries in the Riverside area whereby offenders were breaking into residents sheds and stealing bicycles.
- Violent crime has remained relatively stable compared to the preceding period and last year. Common Assaults and Assaults occasioning ABH accounted for 41% of all violent crime. There has been an increase in robberies this period from four to 11. Most of these were personal robberies and the figures have been inflated by multiple victims in some offences but there are no clear patterns in location or M.O. There was also a robbery of the One Stop shop in Ditton Lane in April. Offenders have been arrested and charged in 28% of violent crime offences.
- Thefts from vehicles have decreased since the previous period and levels are the same as in 2009. Thefts of vehicles, however, have increased from 6 to 11 this period including 3 motorcycles or mopeds. Offenders have been arrested for three of these crimes. Offences are quite dispersed across the Ward but there are two small clusters in Abbey Road and Harvest Way.
- There were 49 thefts of cycles in this period compared to 39 offences in the previous period and 30 offences in the same period last year. Key locations have been the Riverside area with 14 offences occurring in Priory Road, Riverside and Abbey Road alone. This echoes the pattern highlighted earlier for bicycles in sheds being targeted in this area.
- Thefts from shops have remained stable compared to the previous period (51 vs.50) and are lower than last year. The majority of offences occurred at Cheddars Lane (16 recorded thefts) and Ditton Lane (16). Over two thirds (69%) of these offences have been detected.
- Criminal damage has decreased since the last period and in comparison to last year. This is particularly concentrated around the area of Thorpe Way and includes a variety of offences such as smashed windows, slashed tyres and other damage to vehicles.
- Total ASB has decreased from 312 incidents in the previous period to 280 incidents in this period. This is also a decrease compared to the same period last year when there were 334 incidents. There is a concentration of incidents in the area of Thorpe Way and Jack Warren Green. Many of these refer to groups of youths congregating and causing a disturbance to local residents, particularly around the park. There is also a cluster of incidents at the top end of Newmarket Road in relation to people drinking in the street and begging.

Environmental Issues

- Between March and June 2010 there were 9 reports of abandoned vehicles in the ward, compared with 27 during the same period the previous year. This included 2 vehicles, which were not on site following inspection and one vehicle, which was impounded and is currently pending further action. In addition, another vehicle was impounded on behalf of the DVLA for not having valid road tax and was subsequently destroyed following the owner's non-payment of the DVLA fine. There were no specific hotspots during the 2010 period, Ditton Fields/Walk (5) and Jack Warren Green (3) were hotspots during the same period the previous year.

- Between March and June 2010 there were 73 reports of flytipping in the wards compared with 154 during the same period the previous year. All were removed within 24 hours, but there was insufficient evidence to take enforcement evidence. Main hotspots during the 2010 period were Helen Close (12, compared with 17 last year), Fison Road (9, compared with 15 the same period last year) Ditton Fileds/Walk and Dennis Road (both with 6, compared with 9 and 10 respectively last year) and Anns Road (5, compared with 11 during the same period the previous year. Headford Close (12) was also one of the main hotspots during the 2009 period.
- 34 derelict cycles were dealt with between March and June 2010, compared with 54 during the same period the previous year. Barnwell Road (12), Quinton Close (10) and Coldham's Lane (5) were the hotspots during this periods and hotspots during the same period the previous year were Latimer Close (6), Dudley Road (5), Thorpe Way and Barnwell Road (both with 4).
- Between March and June 2010, 24 needles were reported compared with 87 during the same period the previous year. During the 2010 period, this included 20 needles, which were removed from Newmarket Road, the majority from Abbey churchyard. In the 2009 period, this included 38 needles, which were removed from a flytip at Headford Close and 37 from Stourbridge Common.
-

Petersfield Ward

- Total crime in Petersfield Ward has remained relatively stable compared to the previous period (417 offences vs. 416 offences) but has decreased compared to the same period last year (475 offences).
- There have been 21 dwelling burglaries in the current period, compared to 16 in the preceding one and 17 this time last year. There is a small cluster of offences in the Vicarage Terrace/York Street area, an area that has been identified as an historical hot spot for dwelling burglaries. Offences have occurred at various times of the day or night with entry commonly being gained by forcing windows. Typically, small electrical items such as laptops and games consoles have been taken along with cash. A local male has been charged with two of the offences in this location in April.
- Levels of Burglary Other have increased slightly this period from 12 to 16 but remain under the figure of 22 seen for the same period in 2009. Nine of these offences were of sheds or garages and bicycles were stolen in most of these. There were no particular trends in the remaining burglaries of commercial properties.
- Levels of violent crime have increased to 45 compared to 35 in the preceding period. However, this figure is consistent with the number of offences for the same period last year. Most offences (40%) were Assaults Occasioning Actual Bodily Harm or Common Assaults. There are small clusters of offences around the Norfolk Street area and Anglia Ruskin but no trends of note. Levels of robbery have remained stable.
- Levels of vehicle crime (thefts of and from) have remained consistent with the previous period but both show a decrease compared to last year.
- Cycle theft has increased by 40 offences since the previous four months but is consistent with levels experienced between March and June last year. Kelsey Kerridge and Anglia Ruskin remain key hotspots for cycle thefts in Petersfield.
- Thefts from shops have decreased this period from 86 to 56, the same as in 2009. Stores at the Beehive Centre accounted for 93% of thefts, particularly at Asda (24) and TK Maxx (25). In 81% of offences an offender was arrested and charged.
- Levels of criminal damage are slightly below those experienced in the last period and last year (43 compared to 56 previously). Damage was mainly towards vehicles such as broken wing mirrors and smashed windows (19) or dwellings, typically smashed windows (12) There was one arson in the current period for which someone has been arrested.

- Levels of ASB in Petersfield have decreased from 172 to 163 this period this period and from 217 last year.
- There have been a number of reports of ASB and drug misuse in the York Street playground and adjacent streets, discussed during the period with Councillors and residents.

Environmental Issues

- Between March and June 2010 there were 24 reports of abandoned vehicles in the ward compared with 19 during the same period the previous year. This included 6 vehicles, which were not on site following inspection, 4 which were subsequently claimed by their owners and another vehicle was referred to the police. In addition 6 CLE26 notices were issued to an offender on behalf of the DVLA for not displaying road tax on a public highway and will result in a fine issued by the DVLA. Another vehicle was impounded on behalf of the DVLA for not having valid road tax and was subsequently destroyed following the owner's non-payment of the DVLA fine. Sleaford Street (4) and Sturton Street (3) were the hotspots during the 2010 period and the St Matthew's Estate area (3) was a hotspot during the same period the previous year.
- Between March and June 2010 there were 70 reports of flytipping in the wards compared with 106 during the same period the previous year. All were removed within 24 hours and there was sufficient evidence to issue 21 warning letters to domestic offenders. In addition, 2 cases are pending further investigation and waste transfer documentation has been requested from a trade offender. Hotspots during the 2010 period were Mill Road (12, compared with 17 during the same period the previous year), the St Matthew's Estate area (10, also 10 previously), Covent Garden (8), Tenison Road (6, compared with 21 previously), and Devonshire Road (3). Offences at Mill Road, St Matthew's Estate area and Tenison Road resulted in 12 of the formal warning letters being sent.
- 46 derelict cycles were dealt with between March and June 2010, compared with 31 during the same period the previous year. Mill Road (9) and St Matthew's Street (3) were the hotspots during this period and hotspots during the same period the previous year were Mill Road (7), St Matthew's Street/Gardens 6 and Norfolk Street/Terrace (4).

Romsey Ward

- Total crime in Romsey Ward has remained relatively stable compared to the preceding period (264 vs. 267) but is slightly lower than the comparative period last year (288).
- Levels of dwelling burglary have fallen from 36 to 19 during the last four months, which is more consistent with figures for March to June in 2009. There are no clear geographical hotspots with offences being spread across the ward area. Several of the burglaries took place in the evening or overnight and entry to the property was commonly gained by insecure windows or through forcing and smashing them. Laptops appear to be the most commonly stolen item alongside other small electrical articles.
- Levels of burglary other have also decreased compared to the preceding period and last year. Again offence locations were quite dispersed and a variety of items were stolen including bicycles, tools and camping equipment.
- Although levels of robbery have remained consistent, levels of overall violent crime have risen slightly but are still below those seen last year. Again, assaults were most common and there were also a number of more serious wounding offences or GBHs (7). Offences were typically a mixture of domestic related, alcohol fuelled and even a few road-related incidents. Many of the offences occurred in residential houses or in the street on Mill Road. Offenders have been arrested and charged in almost a third of these offences.

- Cycle thefts have again shown a decrease this period with 45 offences compared to 58 in the preceding four months and 66 in the same period last year. Offences are predominantly in the streets off Mill Road closest to the City Centre although there were also five offences at Sainsburys on Coldhams Lane.
- Thefts from shops have increased from 12 to 23 during March and June this year, five offences higher than the same period last year. Again ten offences occurred at Sainsburys and there was a further five at Tesco Express on Mill Road. Food and drink were the most commonly stolen items although a charity collection box was taken from one establishment. Three-quarters of offences have resulted in a suspect being arrested and charged.
- Total ASB in Romsey Ward has increased from 121 to 196 this period but levels are below those of last year (215). There appears to be a particular issue around Vinery Park where local residents are being disturbed by groups of youths using the park and who are also causing damage there. Other clusters of incidents refer to specific noisy neighbour-type issues.

Environmental Issues

- Between March and June 2010 there were 10 reports of abandoned vehicles in the ward compared with 12 during the same period the previous year. This included 3 vehicles, which were not on site following inspection and one, which was subsequently claimed by their owner. Two vehicles were also impounded on behalf of the DVLA for not having valid road tax, one of which was destroyed following non-payment of the DVLA fine. There were no hotspots during either period.
- Between March and June 2010 there were 28 reports of flytipping in the ward compared with 46 during the same period the previous year. All were removed within 24 hours and there was sufficient evidence to issue 9 warning letters to domestic offenders and a verbal warning to a trade offender. In addition, waste transfer documentation has been requested from two trade offenders. Hotspots during the 2010 period were Books Road (7, compared with 8 during the same period the previous year), and Mill Road (4). Offences at Brooks Road and Mill Road resulted in 6 of the formal warning letters being sent. Additional hotspots during the 2009 period included Vinery Road (7) and Seymour Street (6).
- 15 derelict cycles were dealt with between March and June 2010, compared with 17 during the same period the previous year. Mill Road (5) and Catherine Street (3) were the hotspots during this period and hotspots during the same period the previous year were Ross Street and Vinery Road (both with 4) and Brookfields and Coldham's Lane (each with 3).
- Between March and June 2010, 332 needles were reported compared with 67 during the same period the previous year. The majority (320) resulted from a one-off find in a car park. Five needles were also removed from St Peter's Church at Thoday Street. In the 2009 period, this included 20 needles from Brooks Road and 43 from Romsey Recreation Ground.

Coleridge Ward

- Total crime in Coleridge Ward has increased this period from 213 to 257, but levels remain slightly below those experienced in the equivalent period last year (264).
- Levels of dwelling burglary have fallen since the last period from 27 to 17 but are still slightly higher than the 14 experience between March and June in 2009. Offences are fairly dispersed with a small cluster around the Radegund Road and Perne Avenue area. There were also three offences on the same day in nearby flats in Corrie Road. There are no trends in the entry methods used or items stolen which included small electrical items, cash, laptops, jewellery and even a vehicle. There has also been a distraction burglary in

which the suspect purported to be fixing cracks in the victim's walls but actually stole a purse whilst at the house. The same person who was charged with two offences in Petersfield has also been charged with a further six offences in this area.

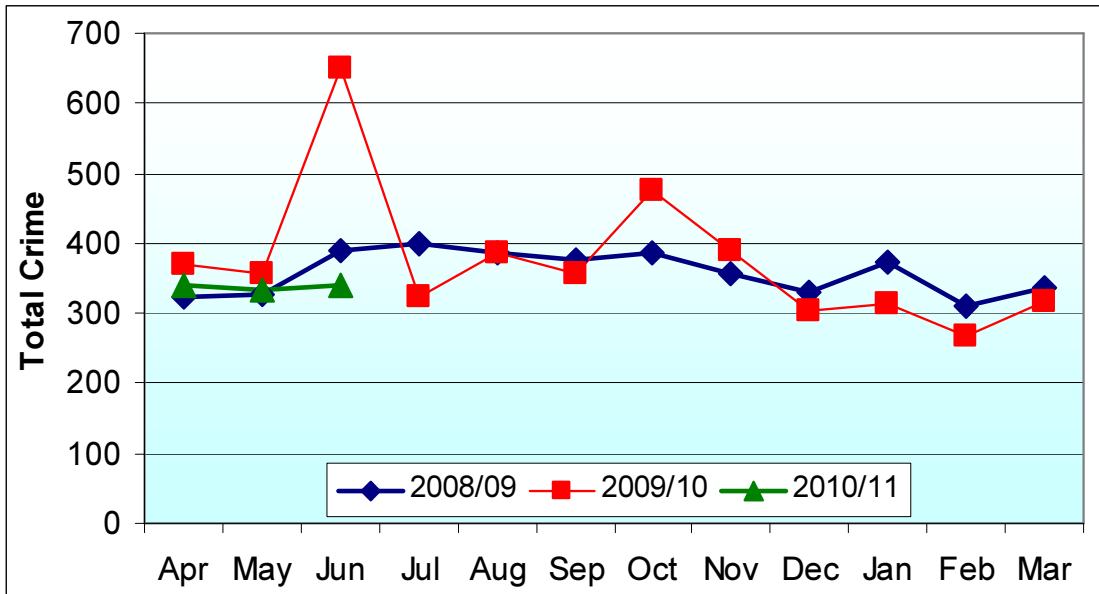
- Levels of burglary other have remained quite consistent, with sheds or garages predominantly being targeted. A variety of items were taken but bicycles were quite often targeted.
- Levels of violent crime have increased to 56 offences compared to 33 in the preceding months and 32 last year. The Leisure Park remains a hotspot for offences, many of which appear to be related to the night-time economy and consumption of alcohol. Most offences have been common assaults or assaults occasioning actual bodily harm and the remainder or offences are fairly dispersed geographically.
- Whilst thefts of vehicles are remained quite stable, levels of thefts from vehicles have decreased substantially from 20 in the previous period to six. There were no trends in location or property targeted.
- Cycle thefts have increased from 34 to 47 this period but are still lower than the comparative period last year when there were 54 offences. Hotspots continue to reflect where the greater proliferations of cycles are such as the Leisure Park, the schools and colleges (Hills Road, Coleridge and St Bedes) and the Rustat Avenue area.
- ASB in Coleridge Ward has increased since the last period from 172 to 234 which is more consistent with the levels seen last year of 244. There a number of incidents from the Leisure Park area and around Homerton Street. In addition a number of repeat calls have been received from a single address, where the resident has subsequently been taken into the care of Mental Health services.

Environmental Issues

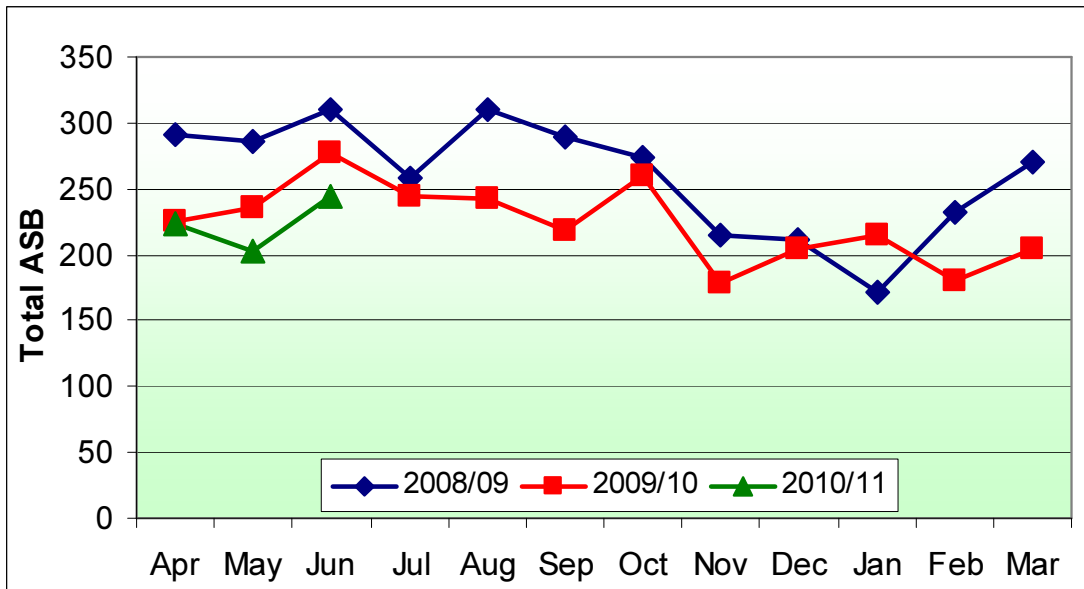
- Between March and June 2010 there were 12 reports of abandoned vehicles in the ward, compared with 13 during the same period the previous year. This included 4 vehicles, which were not on site following inspection and another vehicle, which was referred to the Council's Housing Department. In addition, a CLE26 notice was issued to an offender on behalf of the DVLA for not displaying road tax on a public highway and will result in a fine issued by the DVLA. There were no specific hotspots during the 2010 period, but there were 4 reports during the same period the previous year in Ashbury Close.
- Between March and June 2010 there were 46 reports of flytipping in the ward compared with 45 reports during the same period the previous year. All were removed within 24 hours and there was sufficient evidence to issue 5 warning letters to domestic offenders. Hotspots during the 2010 period were Hobart Road (6, compared with 4 during the same period the previous year), Rustat Avenue/Road (6, compared with 3 previously), Golding Road (4) and Fanshawe Road (3). Offences at Fanshawe Road and Rustat Road resulted in two of the formal warning letters being sent. During the 2009 period, Perne Road (5) and Coleridge Road (3) were also hotspots.
- 13 derelict cycles were dealt with between March and June 2010, compared with 28 during the same period the previous year. St Thomas Road (3) was a hotspot during this period and hotspots during the same period the previous year were Cherry Hinton Road (10), Clifton Road (6), Brackyn Road (4) and Coleridge Road (3).
- Between March and June 2010, 15 needles were reported compared with 1 during the same period the previous year. This included 8 needles, which were removed from Coleridge Recreation Ground.

4. Current Crime and Anti-Social Behaviour Incident Levels

Total Crime



Total Anti-Social Behaviour



NOT PROTECTIVELY MARKED

Crime and Anti-Social Behaviour Incident Levels in the Cambridge East Neighbourhood, by Ward

			Dwelling Burglary	Other Burglary	All Violent Crime (excl. Robbery)	Robbery	Theft of Vehicle	Theft from Vehicle	Cycle Theft	Theft from Shop	Criminal Damage	Other Crime	Total Crime	Total ASB
N'hod	City East	<i>Mar 10 – Jun 10</i>	83	64	203	27	23	68	268	140	169	257	1329	873
		<i>Nov 09 – Feb 10</i>	104	48	165	17	18	89	218	153	196	250	1275	777
		<i>Mar 09 – Jun 09</i>	85	100	186	19	22	117	272	159	250	486	1715	1010
Wards	Abbey	<i>Mar 10 – Jun 10</i>	26	27	67	11	11	26	49	51	48	64	391	280
		<i>Nov 09 – Feb 10</i>	25	12	67	4	6	30	39	50	63	79	379	312
		<i>Mar 09 – Jun 09</i>	33	36	72	8	8	26	30	59	87	321	688	334
	Petersfield	<i>Mar 10 – Jun 10</i>	21	16	45	5	4	19	127	56	43	76	417	163
		<i>Nov 09 – Feb 10</i>	16	12	35	4	2	22	87	86	56	92	416	172
		<i>Mar 09 – Jun 09</i>	17	22	43	5	9	53	122	56	56	87	475	217
	Romsey	<i>Mar 10 – Jun 10</i>	19	8	35	6	6	17	45	23	39	60	264	196
		<i>Nov 09 – Feb 10</i>	36	14	30	6	6	17	58	12	41	41	267	121
		<i>Mar 09 – Jun 09</i>	21	19	39	4	2	25	66	18	46	44	288	215
	Coleridge	<i>Mar 10 – Jun 10</i>	17	13	56	5	2	6	47	10	39	57	257	234
		<i>Nov 09 – Feb 10</i>	27	10	33	3	4	20	34	5	36	38	213	172
		<i>Mar 09 – Jun 09</i>	14	23	32	2	3	13	54	16	61	44	264	244

NOT PROTECTIVELY MARKED

ASB Incident Types in the City East Area Neighbourhood, by Ward

Please Note

Incident levels for each of the wards may not be consistent with the official figures that will be published by the Force and Home Office. This is because the data system used to draw the level of detail needed for the ASB type breakdown for this report may not contain precise locations due to the way incidents are reported e.g. ASB reported where ward boundaries lie could initially be recorded in the neighbouring ward but subsequently corrected.

The figures should only be used as a guide and not regarded as official statistics for publication.

			Abandoned Vehicle	Animal Problems	Begging/Vagrancy	Criminal Damage	Hoax call to emergency services	Litter	Malicious/Nuisance Communication	Noise	Prejudice Incident	Prostitution	Regular Caller – Hist Info.	Rowdy & Inconsiderate Behaviour	Rowdy/Nuisance Neighbours	Street Drinking	Trespass	Vehicle related nuisance/Inappropriate Vehicle use	Violence	Grand Total
N'Hood	City East	<i>Mar 10 – Jun 10</i>	38	0	22	2	9	3	50	125	5	0	7	416	103	9	1	71	3	864
Wards	Abbey	<i>Mar 10 – Jun 10</i>	18	0	3	1	2	1	13	31	2	0	1	117	49	0	0	36	1	275
	Petersfield	<i>Mar 10 – Jun 10</i>	4	0	10	1	1	0	5	21	0	0	0	89	17	7	0	9	1	165
	Romsey	<i>Mar 10 – Jun 10</i>	11	0	9	0	6	2	13	9	3	0	0	108	18	1	1	12	1	194
	Coleridge	<i>Mar 10 – Jun 10</i>	5	0	0	0	0	0	19	64	0	0	6	102	19	1	0	14	0	230

6. Recommendations

The following Neighbourhood Priorities are recommended for consideration:

- Youth-related anti-social behaviour and criminal damage in the public areas of the Thorpe Way estate and Jack Warren Green.
- Continue with Speed reduction plan
- Anti-social behaviour in the York Street playground and adjacent streets linked to drug misuse.